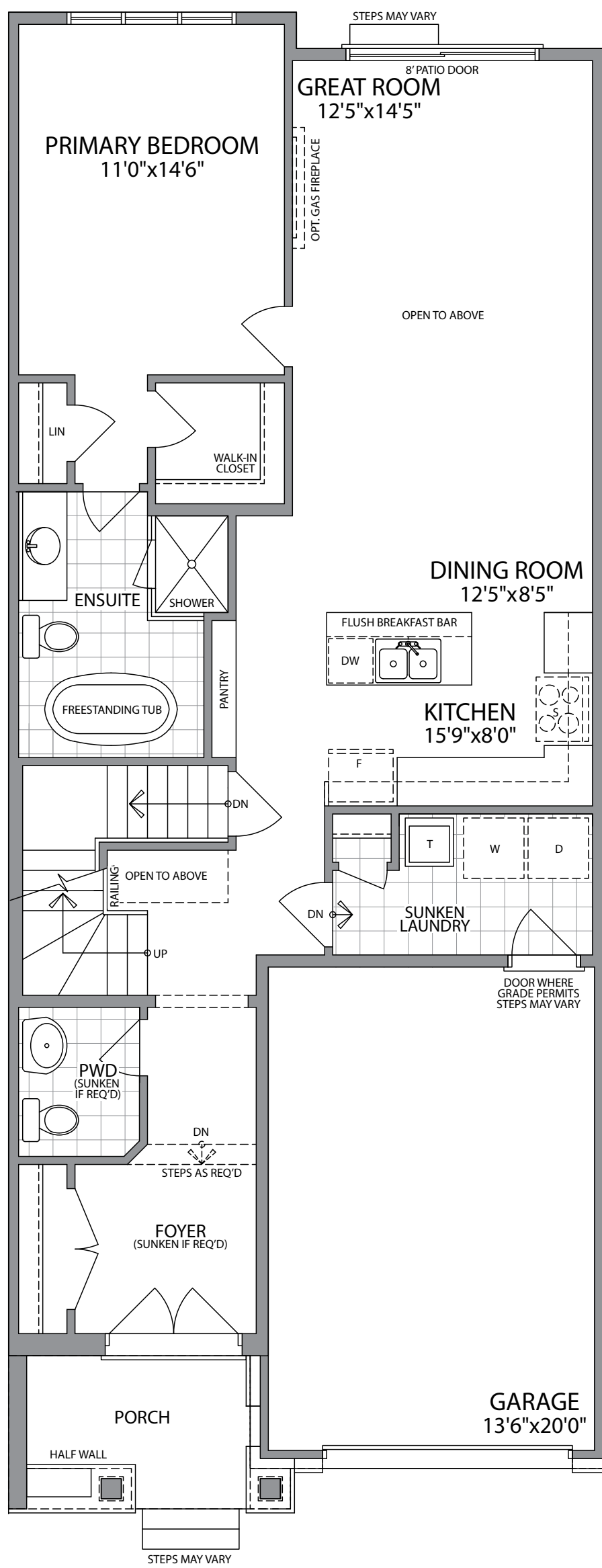
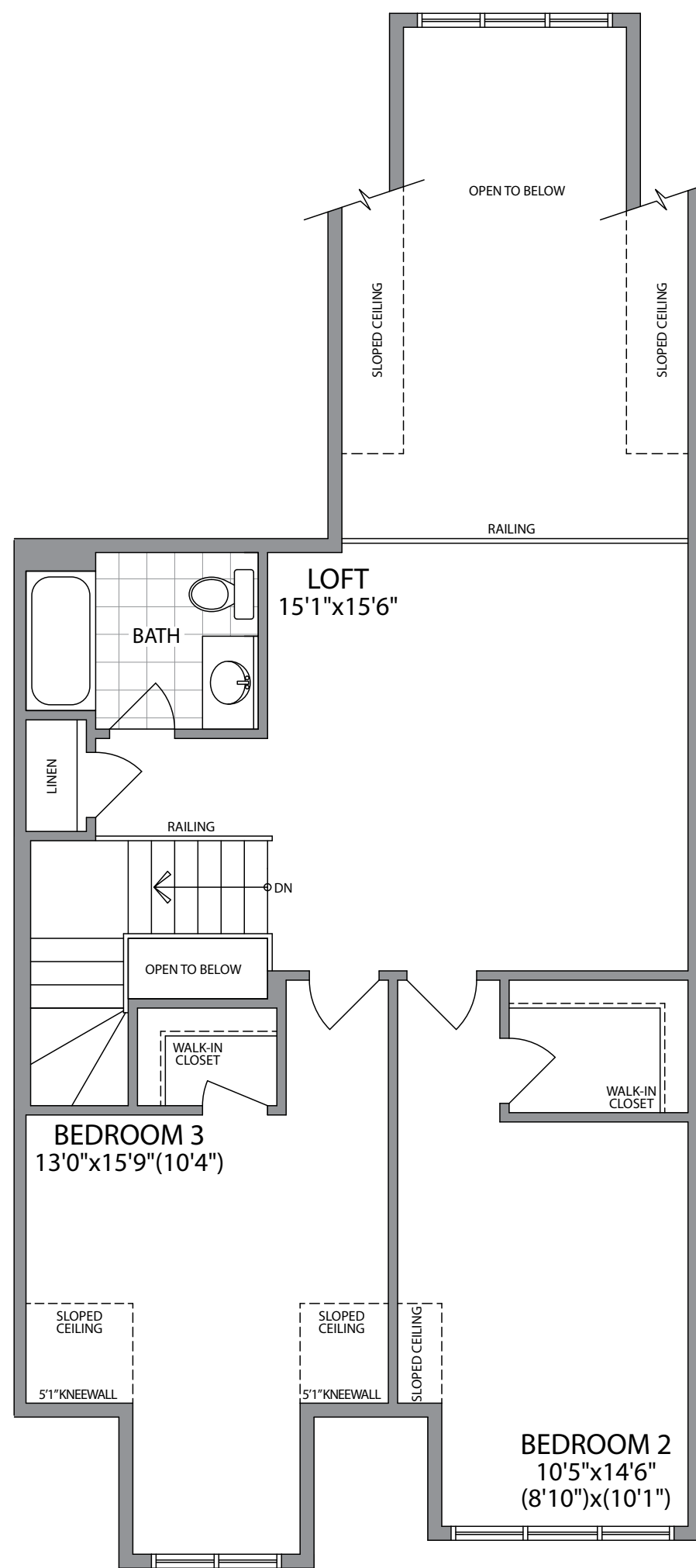


The PIN OAK

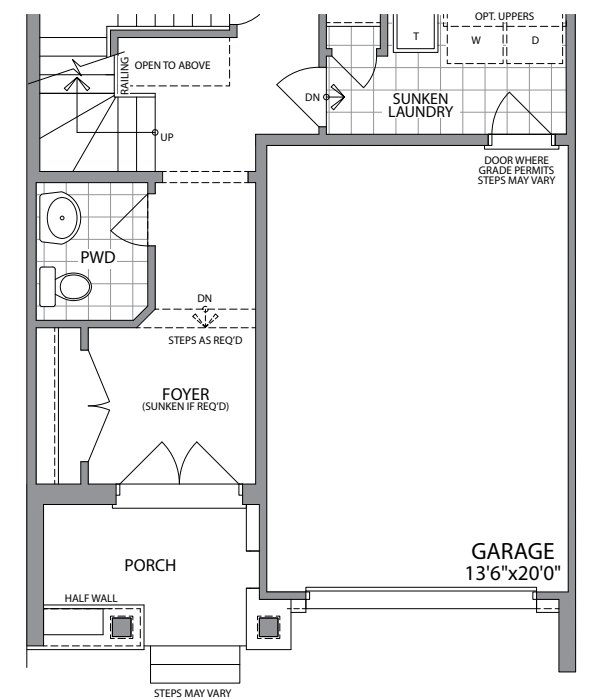
ELEVATION A / ELEVATION A1 / ELEVATION B / ELEVATION B1
2015 SQ.FT. / 2035 SQ.FT. / 2010 SQ.FT. / 2025 SQ.FT.



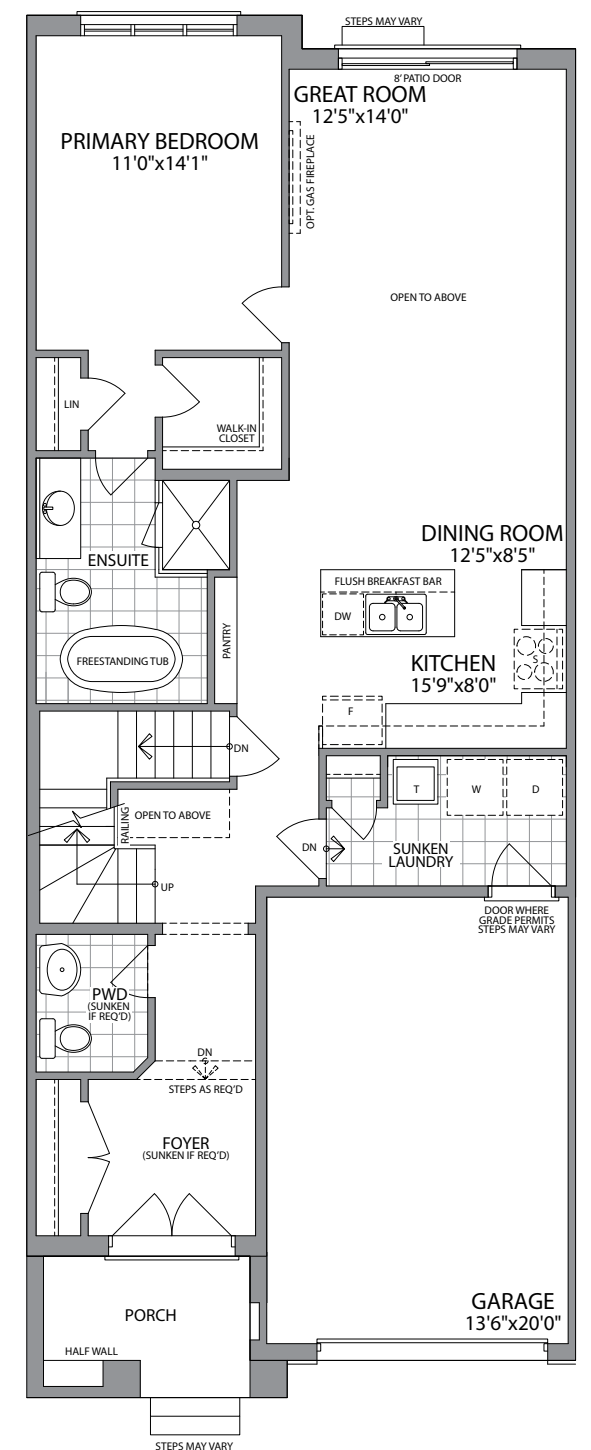
GROUND FLOOR ELEVATION A



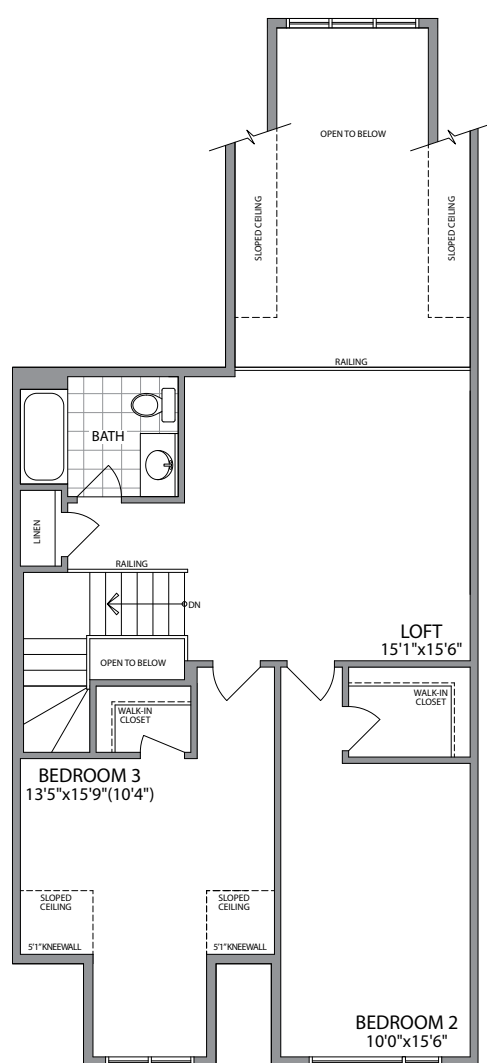
LOFT ELEVATION A



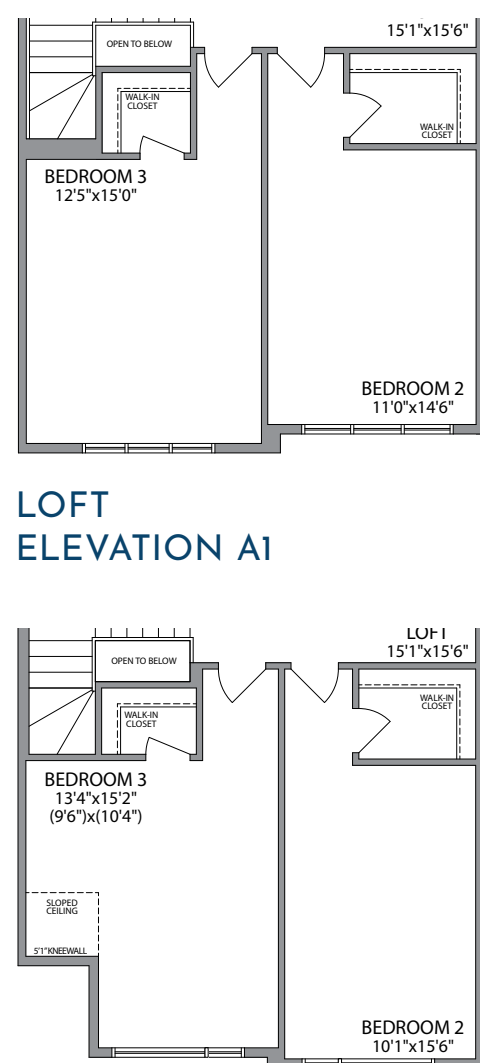
GROUND FLOOR ELEVATION A1



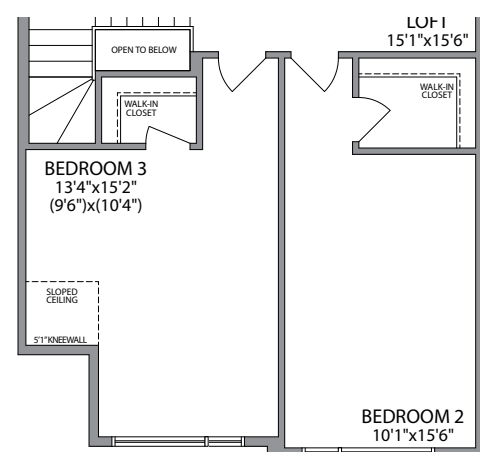
GROUND FLOOR ELEVATION B



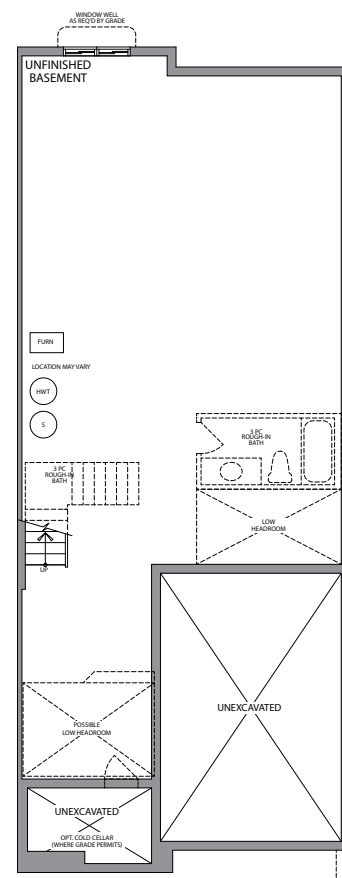
LOFT ELEVATION B



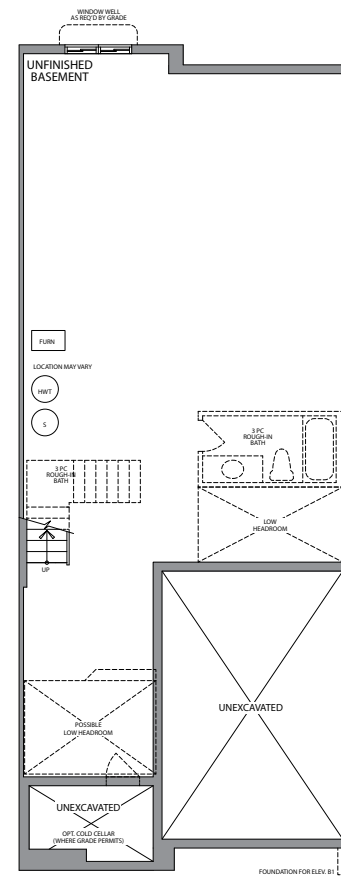
LOFT ELEVATION A1



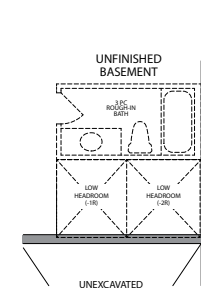
LOFT ELEVATION B1



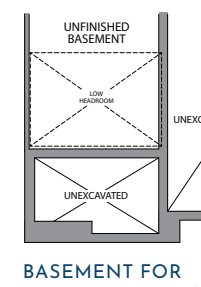
BASEMENT ELEVATION A & A1



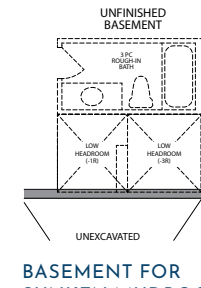
BASEMENT ELEVATION B & B1



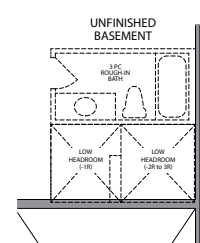
BASEMENT FOR ALTERNATE MUDROOM (2R) ELEV. A, A1, B & B1



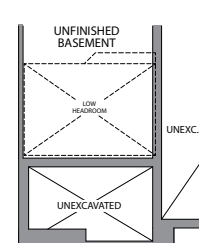
BASEMENT FOR SUNKEN FOYER (2R) ELEV. A, A1, B & B1



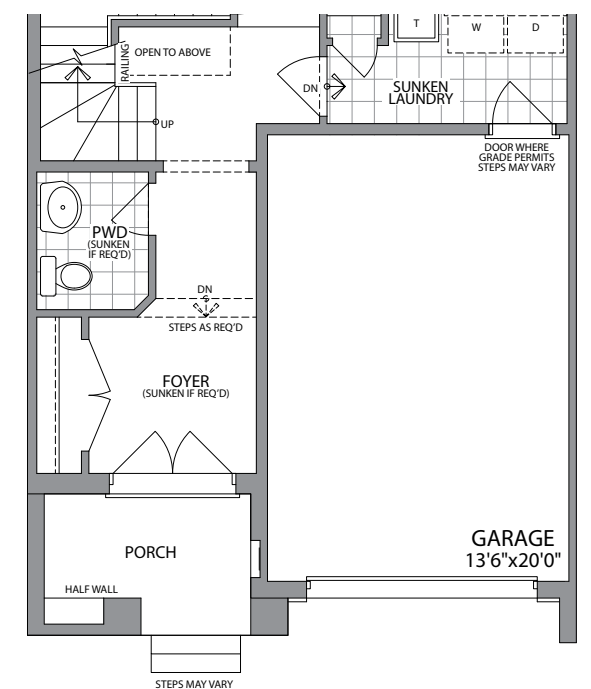
BASEMENT FOR SUNKEN MUDROOM (3R) ELEV. A, A1, B & B1



BASEMENT FOR SUNKEN MUDROOM (2+R) ELEV. A, A1, B & B1



BASEMENT FOR SUNKEN LAUNDRY (2R) ELEV. A, A1, B & B1



GROUND FLOOR ELEVATION B1

Plans and specifications are subject to change without notice. E. & O. E. Actual usable floor space may vary from the stated floor area. All renderings are artist's concept. (TBL-3)

